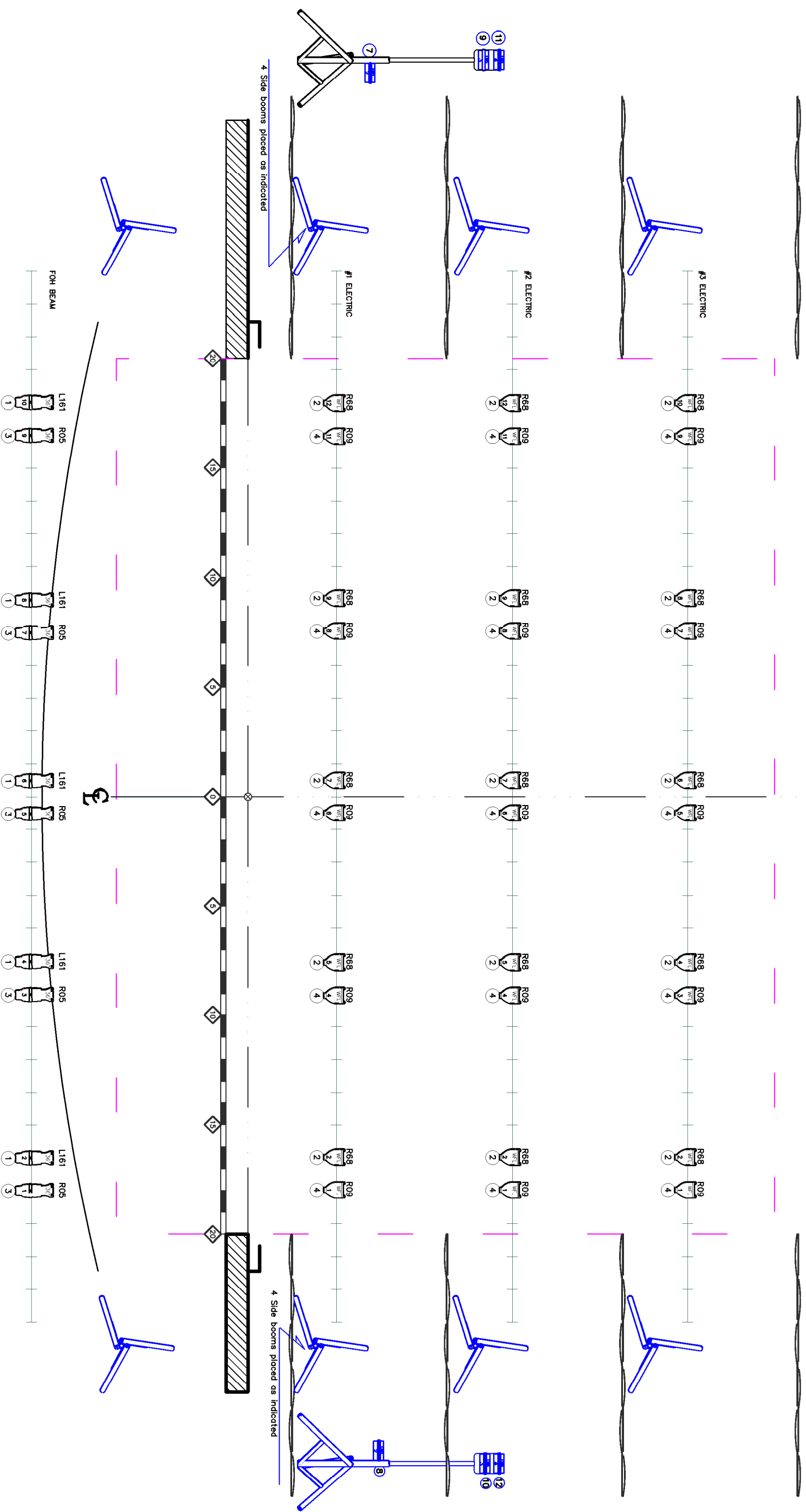
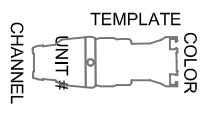


CROSSOVER

BYU PROJECTION SCREEN



KEY



*** Notes:**

- House Lighting Requirements:**
- 2 color front wash: (R05, R68) focused to evenly cover down stage.
 - 2 color back light wash: (R80, R24) focused to evenly cover the full stage.
 - Additional lighting power: (2) separate 110V outlets for LED side light fixtures.
 - Audience lights: Access to turn on/off the audience lights before and after the show is necessary.
 - Please have fixtures circled and provide dimmer number to BDC Technical Director on arrival
- * Please note that this plot is a suggestion. Please use appropriate beam angle and quantity of fixtures to adequately cover the stage. Substitute fixture types according to your facility inventory. Full stage coverage with available instruments is the most important thing.**

BYU Provided Lighting:

- 8 - Side light booms w/ 3 fixtures on each boom - requires a total of 2 @ 110V electrical circuits

BYU Arts Productions

Theatre Ballet Tour: Lighting & Stage Plan

Dance Production and Design
 Benjamin Sanders - Production Manager
 2231 Richards Building • Provo, UT 84602
 Phone: (801) 422-2110
 Cell: (801) 735-9347
 e-mail: benjamin_sanders@byu.edu

SCALE: NA DATE: September 2013

