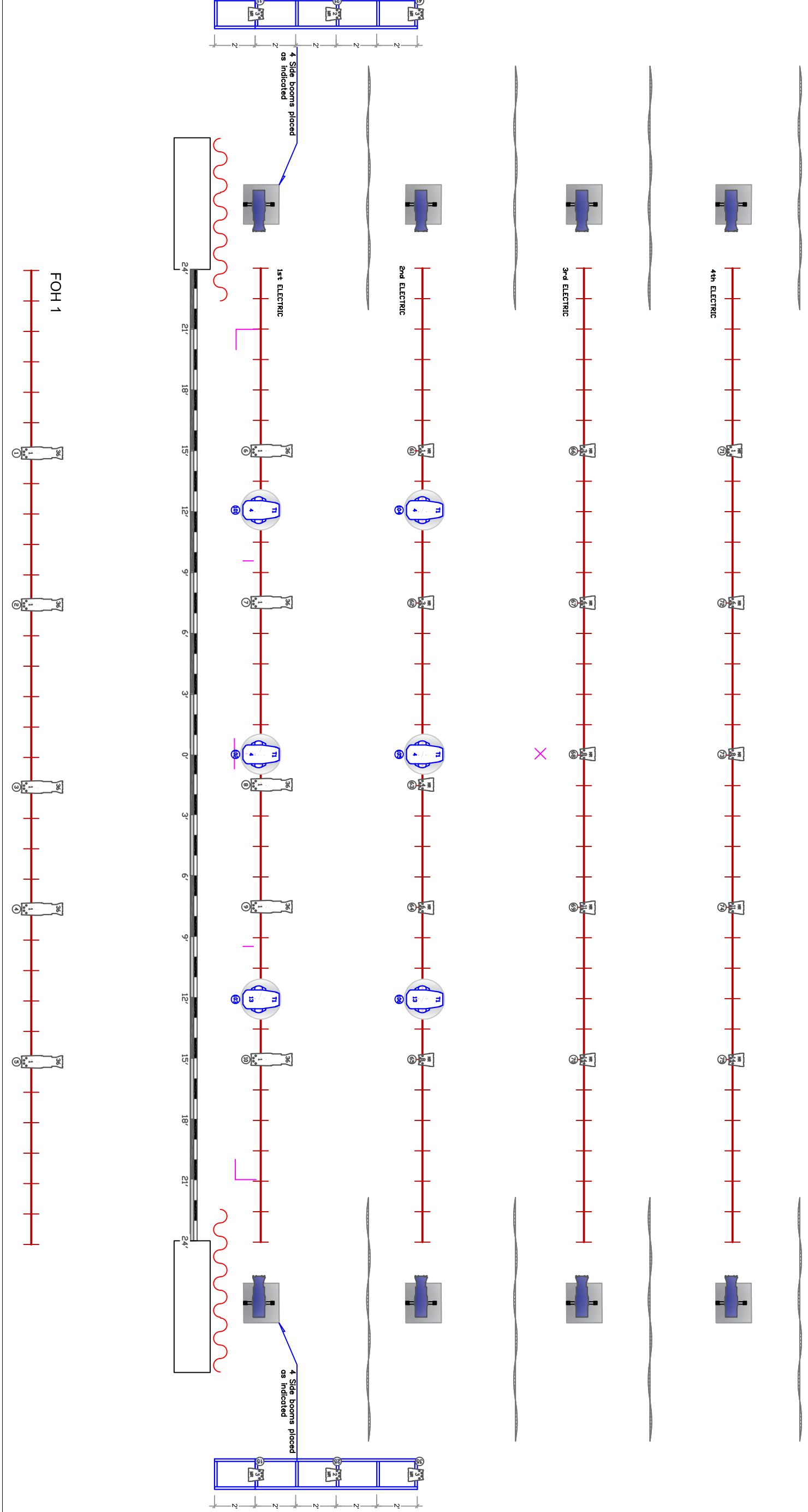




FULL STAGE BLACKOUT

BYU PROJECTION
SCREEN (32 X 16)



KEY	
NC. COLOR	Robe T1 or similar
25' LENS	ETC Colorsourc PAR DB or similar
2 UNIT #	ETC Source 4 LED or similar
114 CHANNEL	

* Notes:	
• 2 color front wash: (R06, R066) focused to evenly cover down stage	
• LED top light wash: focused to evenly cover the full stage from overhead (ETC Colorsourc PAR db or similar)	
• 4 individual no color specials on separate circuits located as per plot	
• 4 individual no color specials on separate circuits located as per plot	
• 4 Side light booms and 4 ETC Colorsourc PAR db or similar	
• 4 Side light booms and 4 ETC Colorsourc PAR db or similar	
• Audience light: Access to turn on/off the audience lights before and after the show is necessary.	
• Please have fixtures circled and provide dimmer number and address to BDC Technical Director on arrival	
• Please note that this plot is a suggestion. Please use appropriate beam angle and quantity of fixtures to adequately cover the stage according to your facility inventory. Full stage coverage will be available	
Instruments is the most important thing.	

BYU Dance Productions	
Ballroom Dance Tour: Lighting & Stage Plan	
Dance Production and Design	
Benjamin Sanders - Production Manager	
2231 Richards Building • Provo, UT 84602	
Cell: (801) 725-4347	
e-mail: benjamin_sanders@byu.edu	

SCALE: 1/4" = 1'	International Tours 2023
------------------	--------------------------